



136 Oxton Road, Wirral, CH41 2TP Offers In The Region Of £60,000



Set in Birkenhead, this two-bedroom flat presents an excellent opportunity for those looking to create their ideal living space. The property features a spacious lounge, perfect for relaxation and entertaining guests, providing a welcoming atmosphere that is sure to impress.

The kitchen, complete with dining space, offers a functional layout. While the flat is in need of modernization, this presents a unique chance for buyers to personalise the space to their taste and style, transforming it into a contemporary haven.

The two well-proportioned bedrooms provide ample room for rest and privacy, making this flat suitable for a variety of lifestyles, whether you are a first-time buyer, a small family, or an investor seeking a promising rental opportunity. The bathroom, though in need of some updating, is functional and serves the needs of the household. EPC Rating E

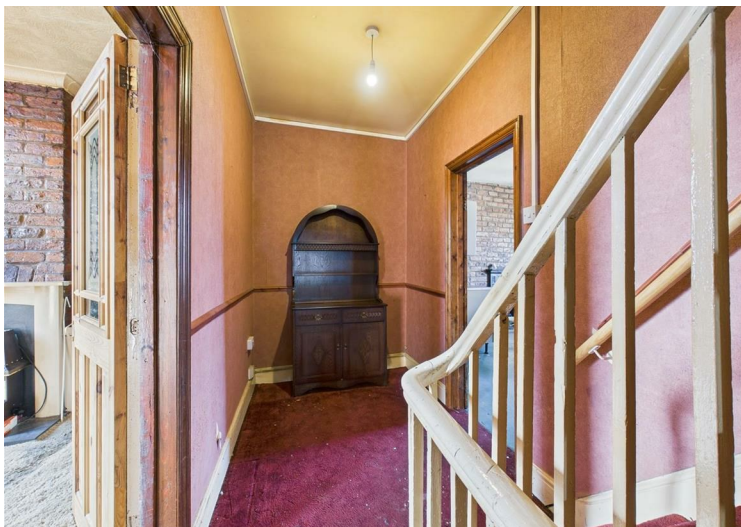
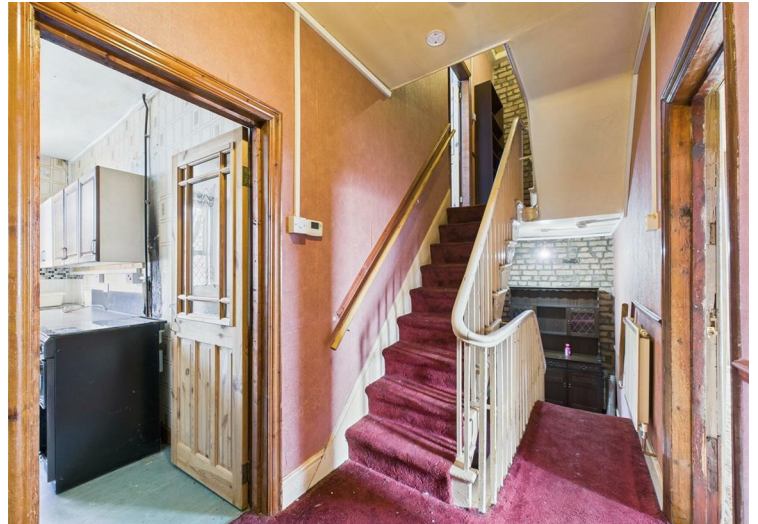
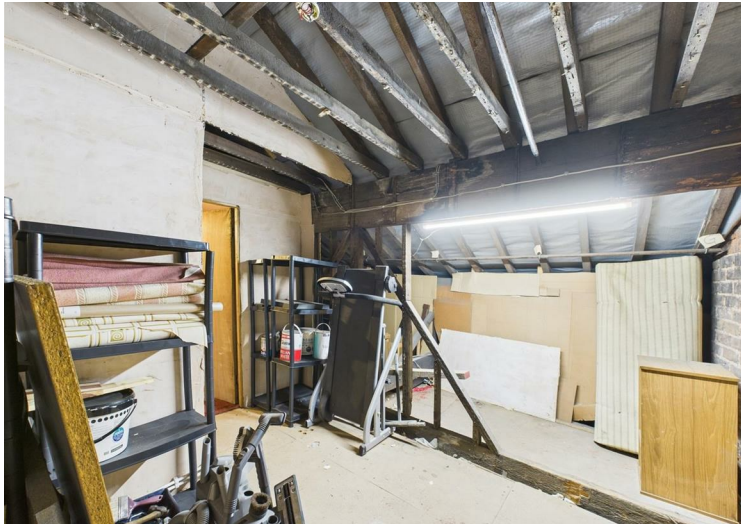
- Two Bedrooms
- First Floor Apartment
- One Large Reception Room
- Kitchen
- Bathroom
- Loft Room
- In Need Of Modernization
- Sought After Location
- Viewing Essential!
- EPC Rating E

Viewing

To arrange a viewing on this property or require further information please contact one of our team on 0151 638 6313



Energy Efficiency Rating		
	Current	Potential
Vary energy efficient - lower running costs		
(92 plus) A		
(81-91) B		
(69-80) C		
(55-68) D		
(39-54) E		
(21-38) F		
(1-20) G		
Not energy efficient - higher running costs		
England & Wales		
EU Directive 2002/91/EC		



These particulars, whilst believed to be accurate are set out as a general outline only for guidance and do not constitute any part of an offer or contract. Intending purchasers should not rely on them as statements of representation of fact, but must satisfy themselves by inspection or otherwise as to their accuracy. No person in this firms employment has the authority to make or give any representation or warranty in respect of the property.